



# ANALOG MODULES, INC.

**MODEL 581**  
AC TO DC VOLTAGE CONVERTER

## AC TO DC VOLTAGE CONVERTER

- DESIGNED FOR USE WITH AMI 570 SERIES CAPACITOR CHARGING POWER SUPPLIES
- OUTPUT POWER - 1500W
- BUILT-IN SOFT START
- LOW COST AC TO DC CONVERTER



### DESCRIPTION:

The **Model 581** AC to DC converter is designed to conveniently convert 115VAC or 220VAC line voltages to 300VDC at up to 1.5kW for use with AMI 570 Series capacitor charging power supplies. Soft start protection is provided to limit excessive in-rush currents.

### SPECIFICATIONS:

#### Input

Voltage 115VAC or 220VAC, 1 $\emptyset$ , 50 or 60HZ

#### Output

Voltage +300VDC, unregulated  
Power 1.5kW at 300VDC. Load application should be delayed four seconds during the soft start period. Capacitor charging current is limited by a 50 $\Omega$  resistor during this time.

#### Connector

Power Mating Molex, 19-09-1099  
Molex, 19-09-2098

#### Size

5.80" x 5.00" x 2.22"

#### Weight

1.5 lbs.

*Specifications subject to change without notice.*



### APPLICATIONS:

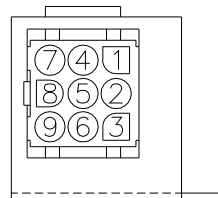
*AC to DC Conversion for Use with Capacitor Charging Power Supplies*

		MODEL NUMBER
		OUTPUT VOLTAGE
		+300VDC
OUTPUT POWER	1500W	<b>581-1</b>

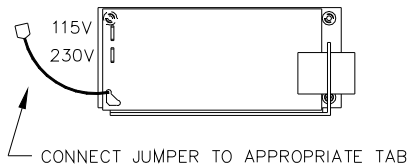
Typical Part Number: **581-1 =**

Output Power: 1500W  
Output Voltage: +300VDC

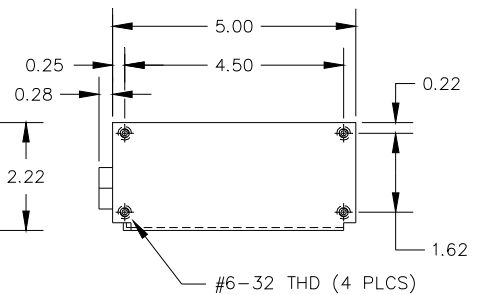
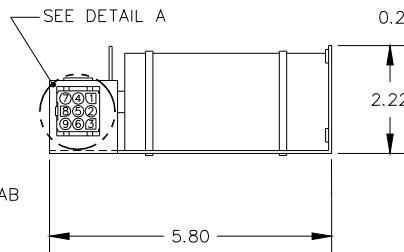
CONNECTOR PIN OUT			
PIN #	SIGNAL NAME	COLOR	AWG
1	AC (LOW)	BLU	18
2	CHASSIS GND	GRN	18
3	AC (HIGH)	BRN	18
4	+325V DC	RED	18
5	CHASSIS GND	GRN	18
6	+325V RTN	BLK	18
7	AC (LOW)	BLU	18
8	NOT USED	----	----
9	AC (HIGH)	BRN	18



DETAIL A  
SHOWS CONN. PIN NO.



TOLERANCES:  
.XX=.02  
.XXX=.010



☐ ⊙ DIMENSIONS ARE IN INCHES

1. REFER TO WIRING DIAGRAM 2739 WHEN USED WITH 576 OR 578 POWER SUPPLY.
2. CABLE IS APPROXIMATELY 18 INCHES LONG.
3. MATING CONNECTOR & HARDWARE SUPPLIED.

325V P/S MODEL 581

P2587 C