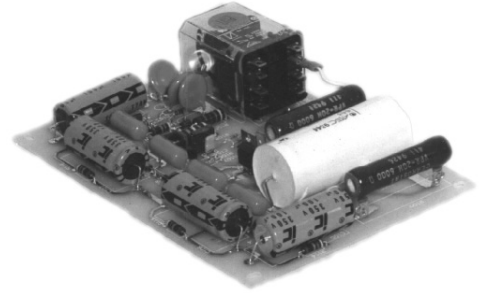




CW ARC LAMP IGNITER MODULE

- DESIGNED TO MEET EN60601-1
- 1000VDC OPEN CIRCUIT VOLTAGE
- 775V, 300mJ TRIGGER FOR SERIES OR PARALLEL TRANSFORMER
- SLOW CAP RESERVOIR DISCHARGE TO MAINTAIN LAMP ARC



DESCRIPTION:

The **Model 592T** CW Arc Lamp Igniter Module is designed to meet the European Medical Equipment Standard, EN60601-1. The **Model 592T** igniter provides 1000VDC from an on-board capacitor reservoir to assist in the ignition of CW arc lamps. Simultaneously, the module provides 775V, 300mJ pulses to energize a series or parallel/external trigger transformer. The **592T** is designed to derive its input power from AMI's **590 Series** of CW power modules, but it can also be supplied by a outside AC source. When a trigger pulse is applied to a trigger transformer and initiates lamp conduction, the 1000VDC applied across the lamp slowly discharges, maintaining lamp conduction until the **590 Series** power modules can sustain a regulated arc.

SPECIFICATIONS:

Input	350V square wave at 20kHz and 24V at 100mA typical (when used with AMI Model 591A CW Power Supply).
Output	
Boost	1000VDC, open-circuit voltage
Trigger	775V, 300mJ trigger every 5-12 seconds
Trigger Transformer	20kV bi-polar, 30ADC, (Add -30 to part number.) 20kV bi-polar, 60ADC, (Add -60 to part number.)
Temperature	0° to 40°C

Connections	
Boost/Trigger Power	Spade connectors Relay spade contacts
Size/Weight	
Igniter PCB	7.0" x 5.0" x 2.0" 2 lbs. (0.9Kgs)
Transformer (-30)	3.95" x 3.75" x 3.00" 3 lbs. (1.36Kgs)
Transformer (-60)	4.70" x 3.75" x 3.815" 5 lbs. (2.27Kgs.)



Specifications subject to change without notice.

APPLICATIONS:

*CW Arc Lamp Igniter for AMI 893A CW Power Supply Systems,
CW YAG Laser Igniter, Medical Applications with EN60601-1 Requirements*

MODEL NUMBER

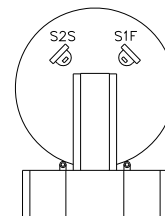
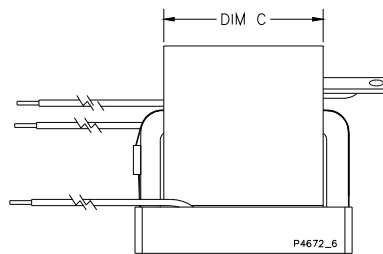
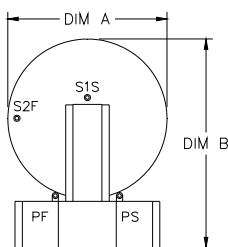
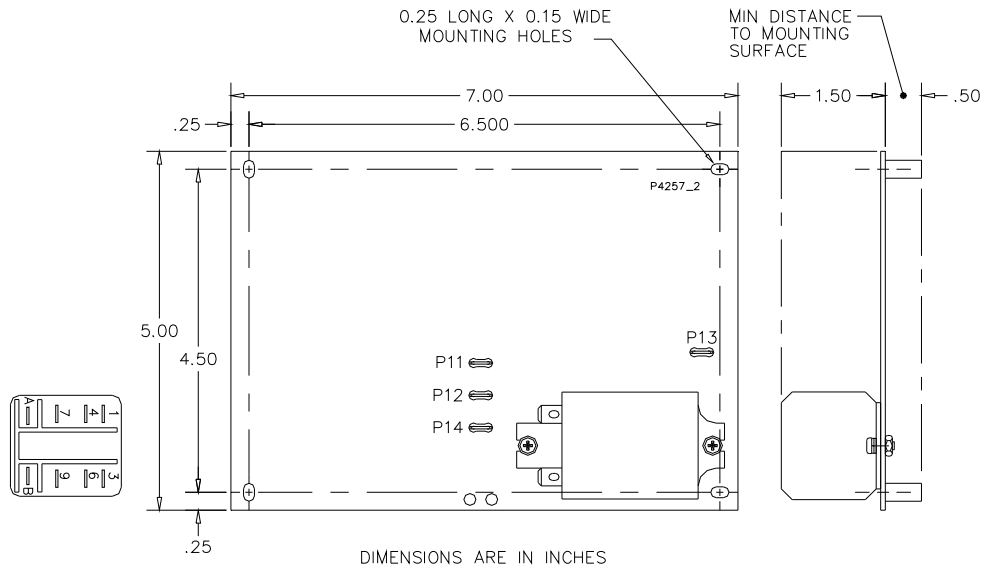
		BOOST 1000VDC
		TRIGGER 775VDC, 300mJ
INPUT VOLTAGE	350V, 20kHz square wave and 24VDC at 100mA typical	592T

Typical Part Number: **592T-30** = Boost Voltage: 1000VDC
 Trigger Voltage: 775V at 300mJ
 Series Trigger Transformer: 20kV (bipolar), 30ADC

NOTE: Add -200 to part number if used with 590 Series power module powered from 200VAC service.

P11	TO +350V (HV BULK)
P12	TO PRI START, TRIG XFMR
P13	(TO E6 OF 5901) TO SEC 1 START, TRIG XFMR
P14	TO PRI FINISH, TRIG XFMR

RELAY	
1	TO P10-1 ON 590-5A
3	N/C
4	N/C
6	E17 ON IGNITOR
7	TO P10-5 ON 590-5A
9	TO P11-1 ON 590-5A
A	+24V SWITCHED
B	+24V RTN



TRANSFORMER DIMENSIONS		
	-30	-60
DIM A	3.00	3.815
DIM B	3.95	4.70
DIM C	2.75	2.95
DIM D	3.75	3.75
DIM E	3.50	3.50
DIM F	2.750	2.375
DIM H	1.500	2.250
DIM J	2.25	2.85

