



FAST PEAK PULSE STRETCHER

- 2 STAGE PEAK SENSE
- FAST INDEPENDENT RESETS
- HIGH INPUT IMPEDANCE
- INPUT GATING



DESCRIPTION:

The **611A Series** Pulse Stretchers output a DC level equal to the peak value of a single narrow pulse down to 20ns FWHM. Fast independent resets facilitate processing of complex multiple events. DC outputs allow for post-processing at slower speeds.

SPECIFICATIONS:

Input		Reset(s)	
Voltage	0 to 4V pulse	Voltage	0 to 4V typical
Pulsewidth	≥ 20ns FWHM, AC coupled (add -20 to part number)	Pulsewidth	≥ 50ns (Reset #1) ≥ 10μs (Reset #2)
	≥ 50ns FWHM, AC coupled (add -50 to part number)		TTL compatible, AC coupled
Impedance	50Ω (add -50 to part number)		Separate reset for each stage
	10kΩ (add -10k to part number)		
Input Gating	TTL high gives 26dB attenuation	Accuracy	±3% plus ±20mV typical for 100mV to 4V, 20ns input pulse
	10ns gate setup time		±1.5% plus ±20mV typical for 100mV to 4V, 50ns input pulse
Output		Power	±11 to ±16VDC at 45mA typical
Voltage	0 to 4VDC up to 10mA		Internally regulated
Gain	1.04V/V typical	Connections	
Delay	< 1μs	Input	BNC
Drop	< 0.1V/s typical at 25°C; 2 stage	Output	BNC
Size	3.12" x 1.50" x 1.09"	Reset	Pins
		Gate	Pin
		Power	Filter feed-thru pins and ground lug

Specifications subject to change without notice.

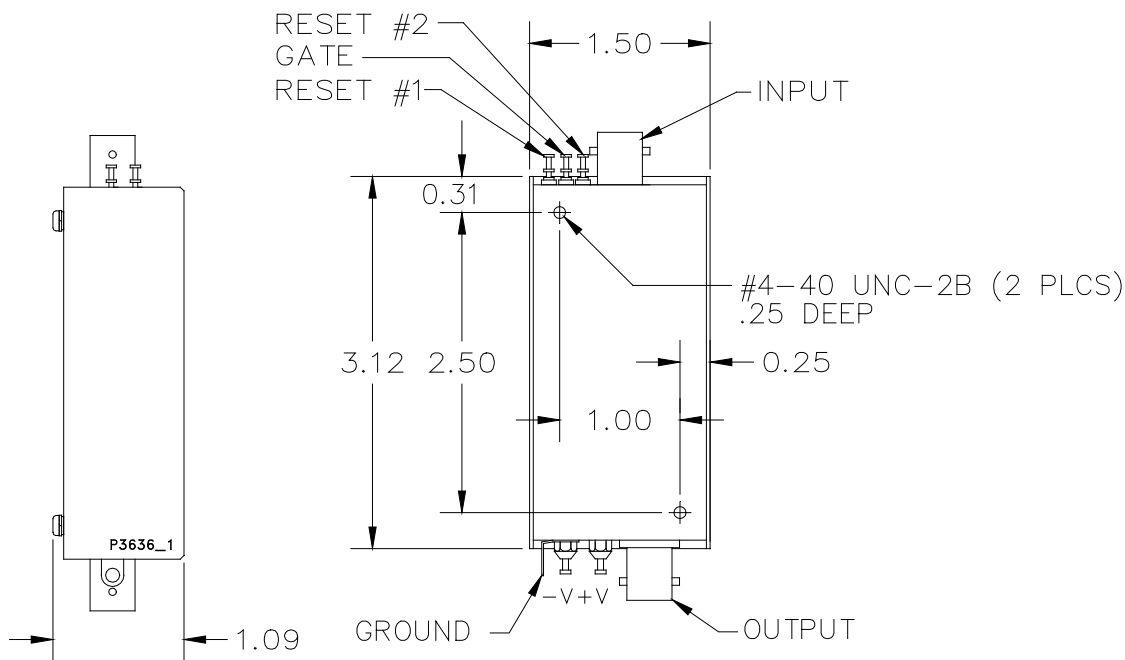


APPLICATIONS:

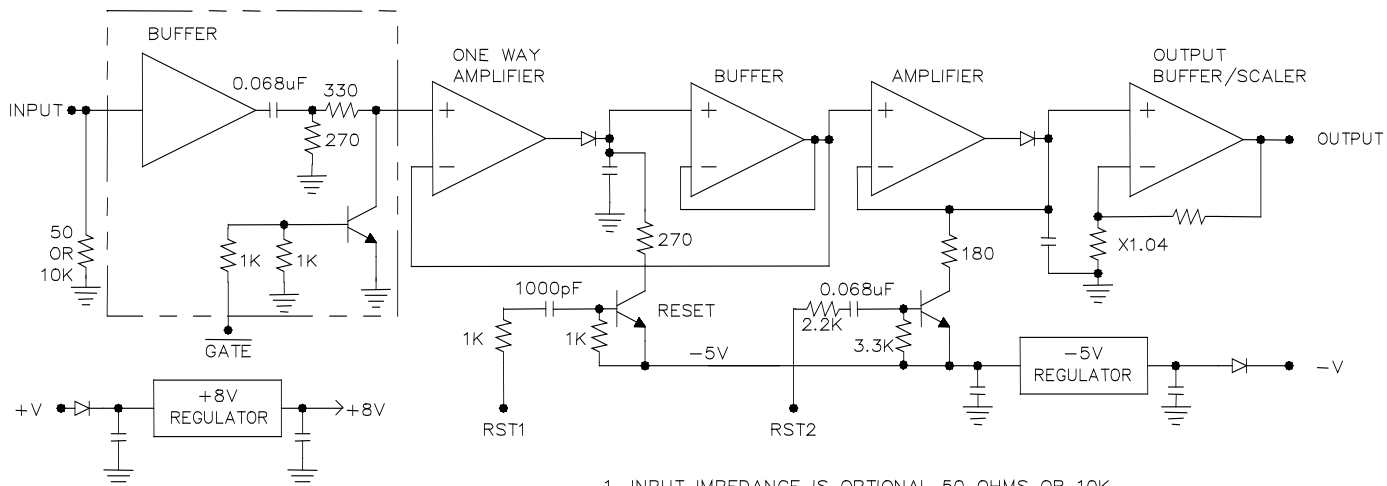
Laser Pulse Capture, Laser Peak Power Monitor, Quad Detector Pulse Processing, Ultrasound Pulse Stretcher, Electronic Transient Capture

		MODEL NUMBER	
		2 Stage < 0.1V/s Droop	
MINIMUM INPUT PULSEWIDTH	20ns FWHM	611A-2-20	
	50ns FWHM	611A-2-50	

Typical Part Number: 611A-2-20-10k = No. of Stages: 2
 Input Pulsewidth: ≥ 20ns FWHM
 Gain: 1.04 typical
 Droop: ≤ 0.1V/s
 Input Impedance: 10kΩ



DIMENSIONS ARE IN INCHES



1. INPUT IMPEDANCE IS OPTIONAL 50 OHMS OR 10K

611A EQUIVALENT SIMPLIFIED CIRCUIT

P3636S1.DWG