



SOLID-STATE POCKELS CELL DRIVER

- ADJUSTABLE OUTPUT TO -3.5kV
- 30ns RISETIME, 150µs RECOVERY
- RUGGED SOLID-STATE DESIGN
- SELF-CONTAINED HIGH VOLTAGE POWER SUPPLY
- COMPACT SURFACE MOUNT CONSTRUCTION
- OPTO-ISOLATED OR TTL TRIGGER OPTIONS



DESCRIPTION:

The **825B Series** Pockels cell drivers are designed for continuous pulsed applications, such as controlled Q-switching of lasers. Solid-state MOSFET technology is used, giving excellent trigger noise immunity and a smooth output waveform. This technique eliminates common problems associated with krytron, avalanche and transformer drivers. Amplitude is continuously variable by adjusting the internal high voltage power supply. Options for triggering include an active high opto-isolator and TTL logic. Pulse amplitudes to -3.5kV are available.

SPECIFICATIONS:

Trigger Input	TTL/CMOS compatible, positive logic, > 3.0V, high impedance, internally limited to +5V via 1kΩ load (825B-1) Opto-Isolated, active high current of 2.5mA to 9.0mA, 2kΩ impedance (825B-2)	Output	Voltage 0 to -3.5kV Load Tested with 47pF load, 66.7MΩ Risetime ≤ 40ns, 30ns typical at -3.5kV, 25°C Recovery ≤ 150µs Pulsewidth 1 to 3µs at 97% T _{delay in-out} < 300nsec (typical) T _{jitter} < 5nsec (typical) Voltage Control Internal multi-turn trimpot External (add -EXT to part number) When using external mode: 4V control yields 0V output 8.2V control yields -3.5kV output HV Monitor lead to monitor HV prior to pulse (add -HV to part number)
Pulsewidth	≥ 300ns to 25µs	Monitor	
Repetition Rate	Up to 100Hz at 3.5kV into 47pF load See graph for alternate voltage/load limits Burst mode permissible	MTBF	>1,000,000 hours per Bellcore SR-332 Ground Fixed, Controlled, 25°C
Power	+15VDC ± 0.5V at 20mA to 100mA depending on PRF and output voltage	Size	3.73" L x 1.25" W x 0.48" H
Temperature	Operating -40° to +85° C Storage -55° to +125° C	Weight	1.8 oz.
Connectors	Input 4 pin connector Output 12" flying leads		

Caution: Mounting hardware must be Non-Conductive.
Nylon hardware is provided.

Specifications subject to change without notice.



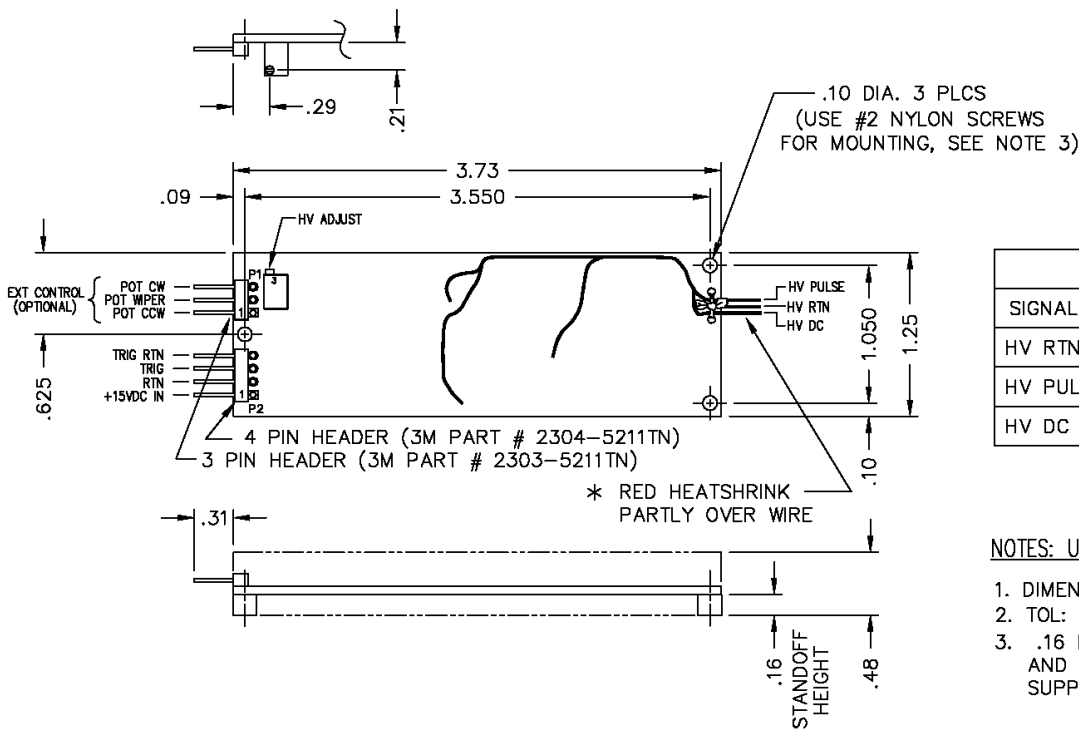
APPLICATIONS:

Driving E-O Q-Switches for Q-Switching Solid-State Lasers, High Voltage Pulser

		MODEL NUMBER	
		OUTPUT SWING	
		0 to -3.5kV	
INPUT VOLTAGE	+15V ± 0.5V	825B-1	825B-2
TRIGGER		TTL	OPTO-ISOLATED

Typical Part Number: 825B-2-HV = Input Voltage: +15V ± 0.5V
 Output Voltage: 0 to -3.5kV
 Trigger: Opto-isolated, active high current of 2.5mA
 Voltage Control: Internal multi-turn trimpot
 HV Monitor: HV monitor lead provided to set HV prior to pulsing

* Rotate HV Adjust trimpot counter-clockwise to increase output voltage

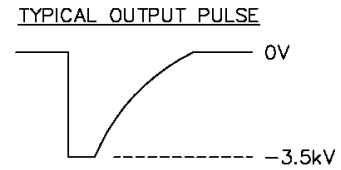
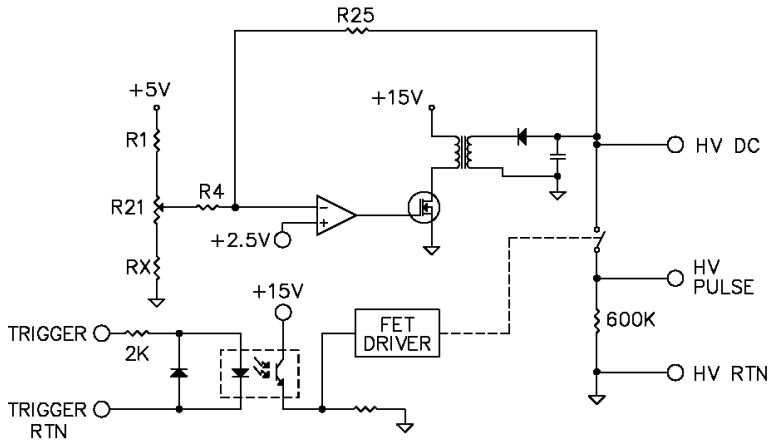


OUTPUT	
SIGNAL NAME	COLOR
HV RTN	BLACK
HV PULSE	WHITE
HV DC	WHT/RED *

NOTES: UNLESS OTHERWISE SPECIFIED

1. DIMENSIONS ARE IN INCHES.
2. TOL: .XX ± .03, .XXX ± .010
3. .16 LONG MOUNTING SPACERS AND .56 LONG NYLON SCREWS SUPPLIED WITH UNIT.

825B-2 EQUIVALENT SIMPLIFIED CIRCUIT



P7513_3

CAUTION: Mounting hardware must be Non-Conductive. Nylon hardware is provided.

Output Voltage vs. Maximum Repetition Rate for Various Loads at 25°C, 15VDC Power

