

### 7555 INTERFACE TEST BOARD

- Standard RS232 for easy interfacing to PC or other serial device at 57.6kbps.
- LVTTTL interface for connection to AMI LRF Receiver Range-Processor operating at 115.2 kbps.
- Pass-thru mode that allows RS232 host system (such as standard PC) to communicate with an AMI LRF Receiver Range-Processor connected to the LVTTTL interface. The 7555 Interface Test Board provides buffering and baud rate translation.



### DESCRIPTION:

The 7555 Interface Test Board is designed to assist the evaluation and development of products that incorporate an AMI Model 7555 LRF Receiver Range-Processor and custom variants. All required mating cables are included with the device.

### SPECIFICATIONS:

The 7555 Interface Test Board only requires +5V & GND connections. Typical current is 0.04A without any load on the LVTTTL transmitter.

**Size:** 4.46" x 3.00" x 0.94"



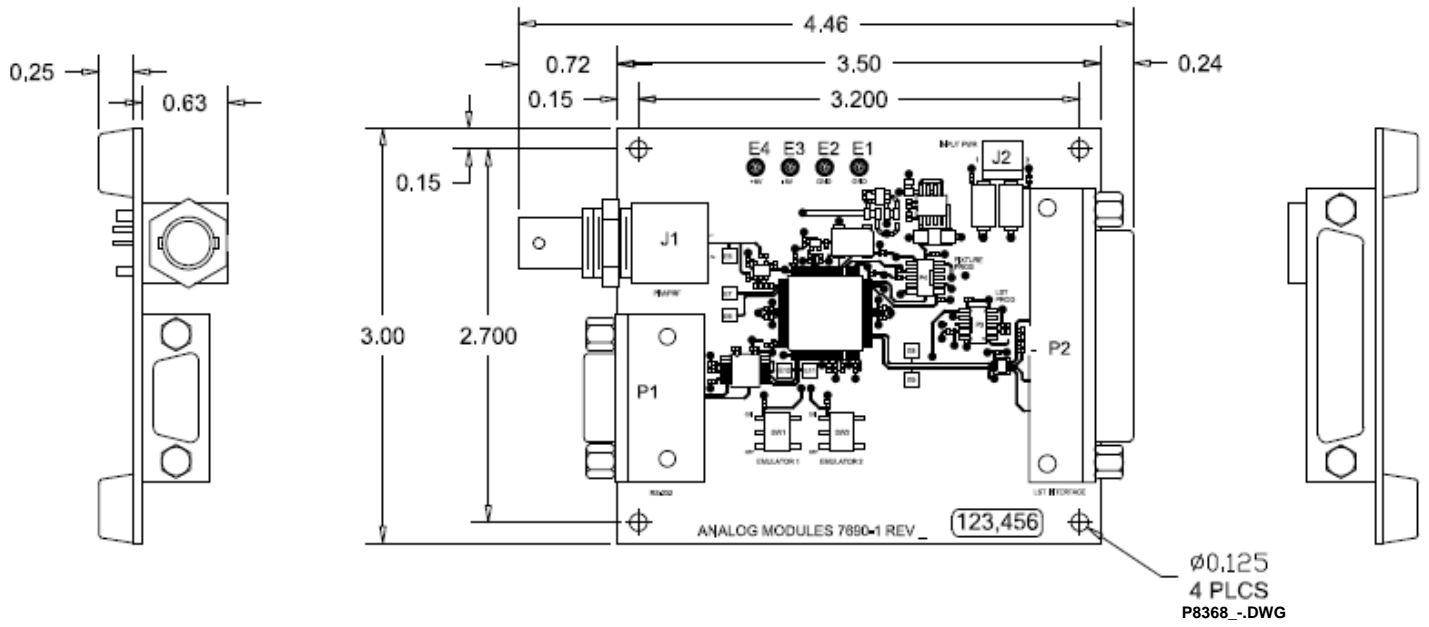
*Specifications subject to change without notice.*

### APPLICATIONS:

*Laser rangefinding for airborne, vehicle, man-pack or handheld platforms*

"In the event this commodity will be transferred to a "foreign person" as defined in 22 CFR 120.16, either outside or within the United States, a validated US State Department license is required."

# DIMENSIONS:



# INTERFACE:

