



ISOLATED SWITCH-MODE POWER SUPPLY

- 1750W IN 7.3" x 4.4" x 8.3" OEM PACKAGE
- ELECTRONIC POWER FACTOR CORRECTION
- CE MARKED AND APPROVED TO UL 60601-1 MEDICAL SAFETY STANDARD
- LOW LEAKAGE CURRENT
- LOW EMI
- HIGH EFFICIENCY
- REMOTE HV PROGRAMMING



DESCRIPTION:

The **Model 5724** Isolated Switch-Mode Power Supply uses a proprietary power conversion technique to charge energy storage capacitors and maintain this output level for switched, variable pulsewidth solid-state laser applications. The **Model 5724** provides the highest power density of any similar module on the market today and can be configured for either positive or negative output voltage. The **Model 5724** is designed to meet the isolation and leakage current requirements for the most stringent medical requirements and the control interface can be tailored to meet your present needs. For higher average power applications, ask about AMI's **Model 5754**.

SPECIFICATIONS:

Input

Voltage	103 to 127VAC, 1 \emptyset , 50/60Hz (add -C to part number) or 198 to 253VAC, 1 \emptyset , 50/60 Hz (add -D to part number)
HV Control	0 to 10V proportional control, 10k Ω input impedance (standard)
Inhibit	3.5 to 24VDC, 10k Ω input impedance

Connections

HV	Coax., MHV
Control	DB-15S, 15 pin D-sub
Power	Molex, 19-09-2038
Mate	Molex, 19-09-1039

Cooling Forced air, fan included

Operating Temperature
0° to +40°C

Output

Power	1750W, 400V \leq V _{MAX} \leq 1000V Output power will be reduced when operating at <90% of V _{MAX} . (See power derating curve on reverse.)
Voltage (Maximum)	400V to 1000V (specify in part number) Negative output (add -N to part number)
Regulation	0.1%
Efficiency	85% to 90% (typical)
Power Factor	>0.9 (typical)
Charged Indication	22VDC via 1k Ω output (typical)

Leakage Current \approx 100 μ A typical
Protection Open Circuit, Short Circuit,
Thermal Overload, Over-Voltage

Size 7.3" x 4.4" x 8.3"
Weight 7 lbs

Specifications subject to change without notice.



APPLICATIONS:

Constant Voltage Output for Solid-State Lasers

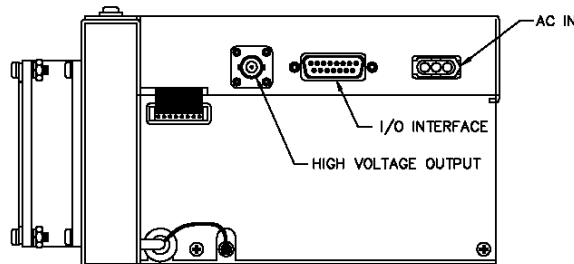
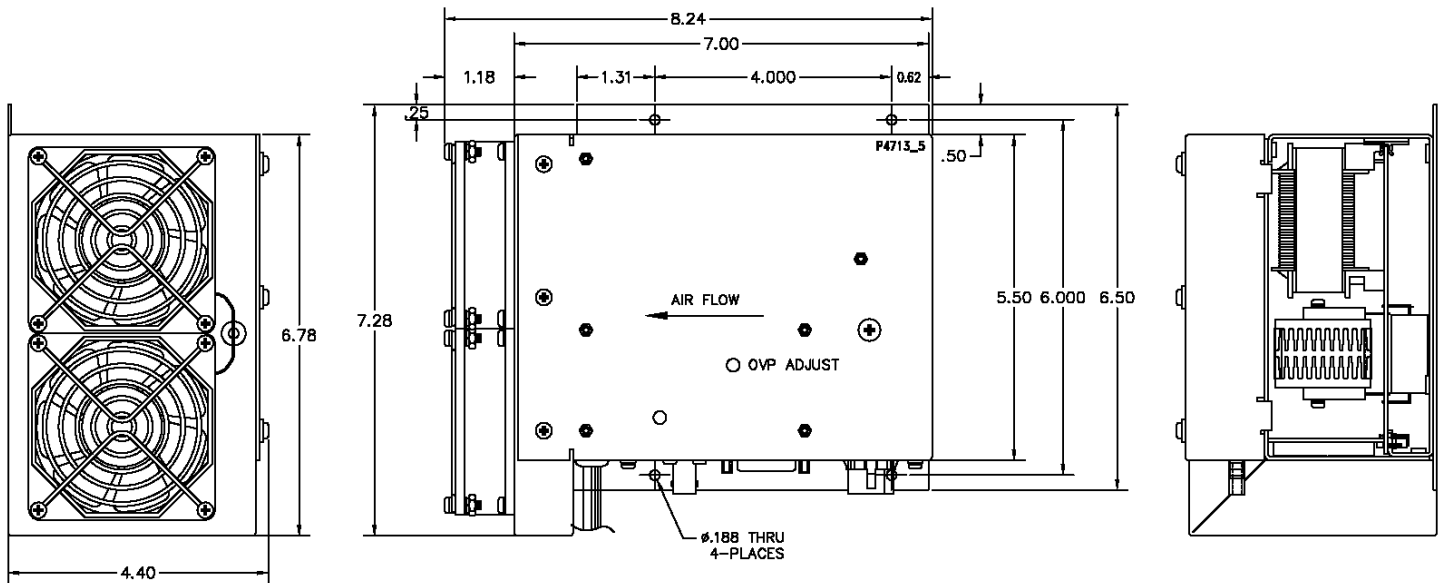
		MODEL 5724-XXXX	
		OUTPUT POWER	
		230VAC Input	115VAC Input
Output Voltage (Maximum)	400V to 1000V	1750W	1100W

Typical Part Number: **5724-1000N-2-D =**

Output Voltage: -1000VDC (Negative)

Output Power: 1750W

Input Voltage: 230VAC, 1Ø, 50/60Hz



I/O INTERFACE (-2)

PIN	DESCRIPTION
1	INHIBIT
2	N/C RESERVED
3	OVERTEMP STATUS INDICATOR
4	PROGRAM RTN / GND
5	PROGRAM VOLTAGE
6	OVERVOLTAGE STATUS INDICATOR
7	VOUT PEAK HOLD
8	VOUT MONITOR
9	+12VDC
10	N/C RESERVED
11	+10V REFERENCE
12	SIGNAL RETURN
13	END OF CHARGE INDICATOR
14	SIGNAL RETURN
15	GROUND INTERLOCK

