

### 742DP EMULATOR TEST BOARD

- Standard RS232 for easy interfacing to PC or other serial device at 57.6 k baud.
- RS422 interface for connection to AMI quadrant laser spot tracker or host system (current options include 57.6 k, 1 M, 5 M baud).
- Emulator that responds to AMI quadrant laser spot tracker commands via RS232 or RS422 interfaces.
- Pass-thru mode that allows RS232 host system (such as standard PC) to communicate with an AMI quadrant spot tracker connected to the RS422 interface. The 742DP Emulator test fixture provides buffering and baud rate translation.
- PRF/PIM code sequence generator that can be used to trigger an external laser system.
- Programming ports to allow for future upgrades for both the 742DP emulator and any AMI quadrant laser spot tracker using an Actel FlashPro3.



### DESCRIPTION:

The 742DP Emulator is a test fixture designed to assist the evaluation and development of products that incorporate an AMI quadrant laser spot tracker Model 742DP-1, 742DP-2, and custom variants. All required mating cables are included with the device.

### SPECIFICATIONS:

The 742DP Emulator test fixture only requires +5 V & GND connections. Typical current is 0.04 A without any load on the RS422 transmitter, and 0.06A with 120 Ohm load on the RS422 transmitter.

If a laser spot tracker is connected to the LST Interface connector –5 V will also be required. Additional current will be required to power the laser spot tracker (including –5 V).

**Size:** 4.46" x 3.00" x 0.94"

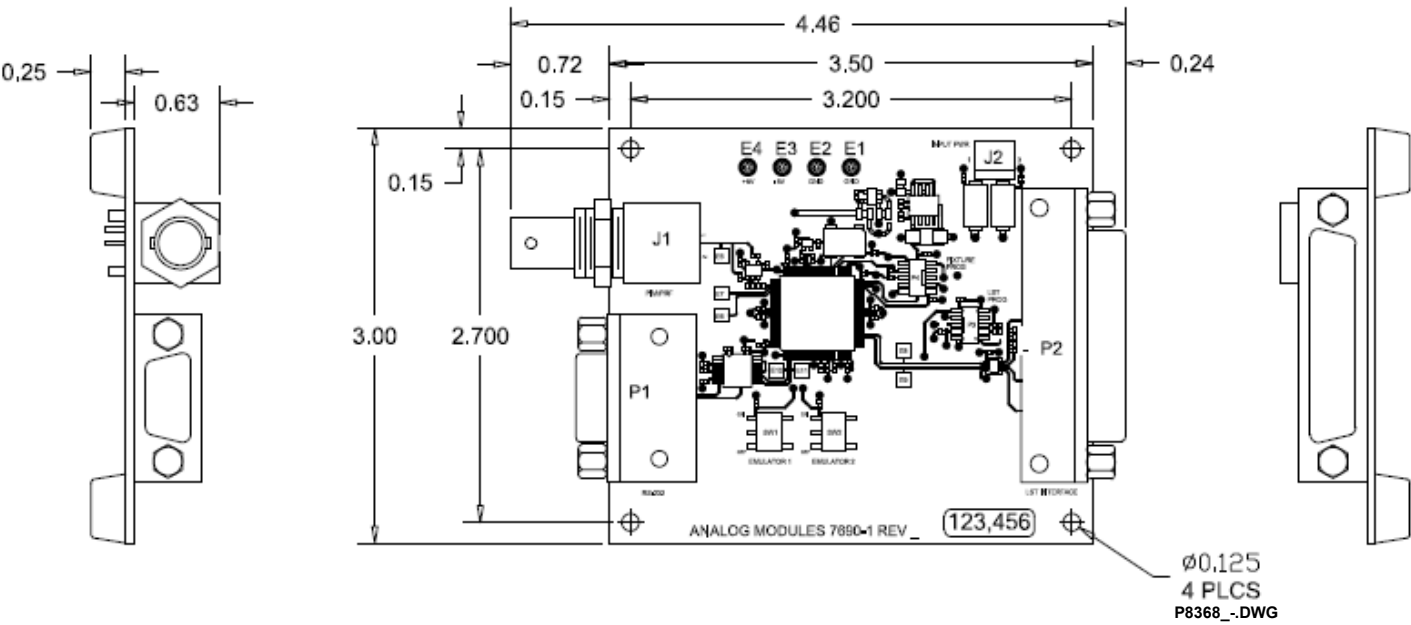
*Specifications subject to change without notice.*

### APPLICATIONS:

*Missiles, UAS, Mounted Tracking Systems, Weapons Systems*

"In the event this commodity will be transferred to a "foreign person" as defined in 22 CFR 120.16, either outside or within the United States, a validated US State Department license is required."

DIMENSIONS:



INTERFACE:

